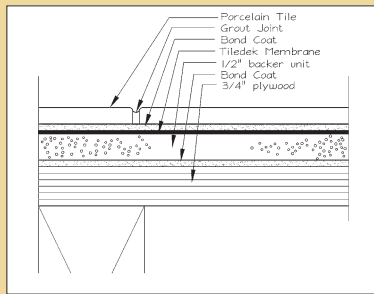
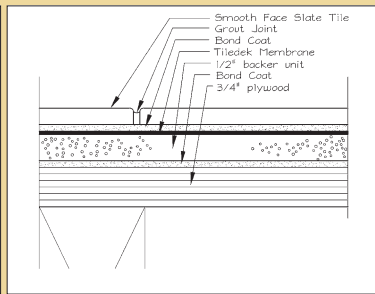


TILEDEK ASSEMBLY CHART

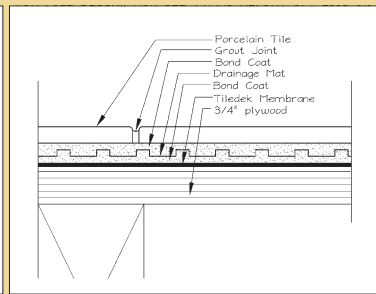
ASSEMBLY #1



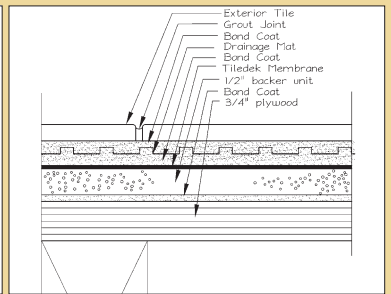
ASSEMBLY #2



ASSEMBLY #3



ASSEMBLY #4



Tiledek Reference	UFT 2008-08 / TD-1	UFT 2008-09 / TD-2	UFT 2008-010 / TD-3	TD-4
Exterior Application				
over living area	✓	✓	✓	✓
over non-living area	✓	✓		✓
Performance / service duty				
extra heavy				
heavy	✓			
moderate (commercial & light institutional)	✓			
light (commercial)	✓			
residential	✓	✓	✓	✓
Sub Floor				
plywood	✓	✓	✓	✓
concrete	1) ✓	1) ✓	1) ✓	1) ✓
Outdoor Tile				
porcelain	✓		✓	✓
slate		3) ✓		
Drainage Layer	2)	2)	✓	2)

Note:

- 1) ASTM C-627 tests conducted on a wood framed deck assembly. Assume similar "Performance" on a concrete deck assembly with similar structural capabilities
- 2) Assembly #3 assembly included a "drainage layer" & achieved a "Residential - Performance" rating. Assume a similar "Residential - Performance" rating if the same drainage layer included in assemblies #1, #2 & #4.
- 3) Natural stone must be gauged with minimum tolerance. Uneven stones cannot be levelled when using a thin set mortar bed.